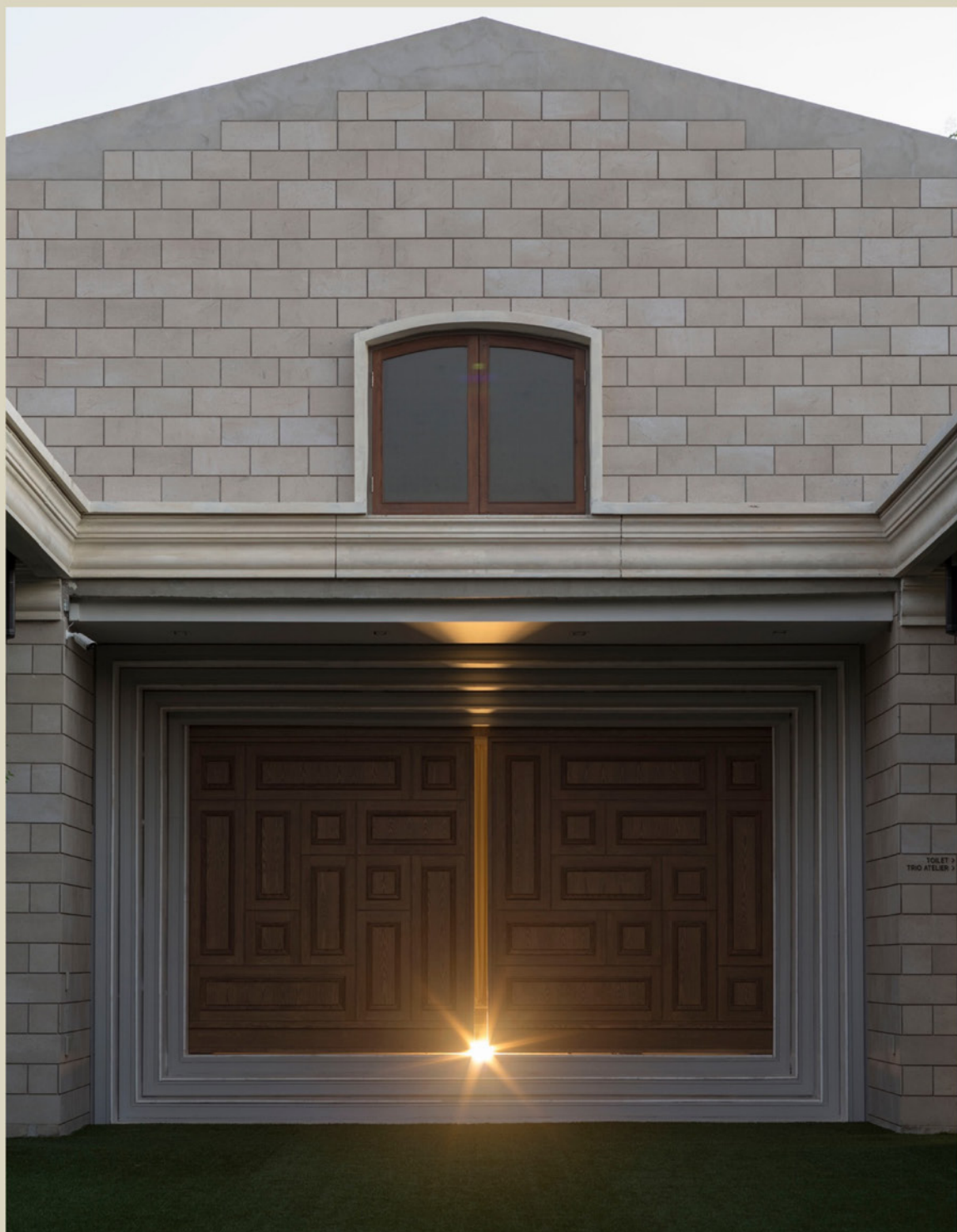



VARAVELA



WEDDING
PACKAGE

“varavela means
the special occasion
in your lifetime.”

“we do not remember days,
we remember moments.”



“VARAVELA”
was assembled from two Thai words.

VARA means special occasion,
VELA means time,

therefore “VARAVELA”
means the special occasion
in your lifetime.



"we do not remember days,
we remember moments"



"the best pet-friendly venue"



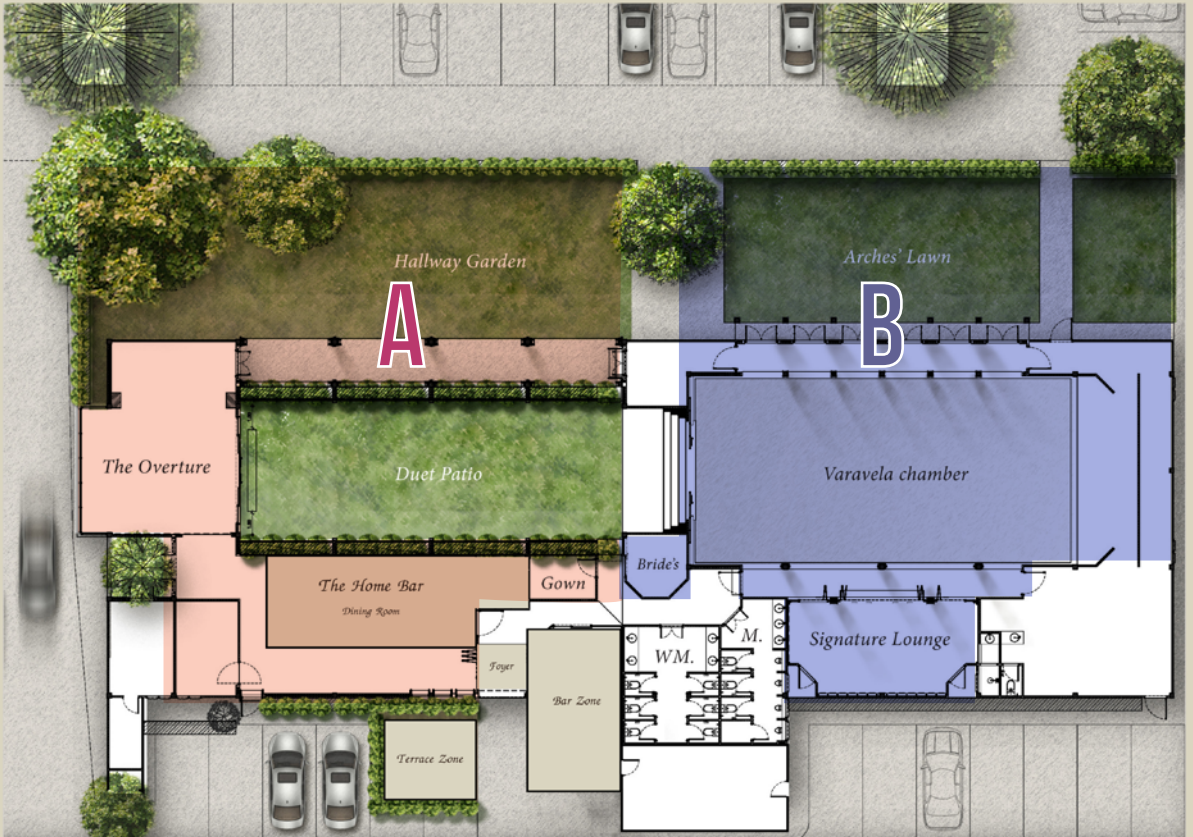


"after party vibes"

VARAVELA GARDEN HALL

SPACE

“VARAVELA” garden hall was designed to give you the supreme private experiences. It is the unique architectural design that is embraced with trees and sceneries. The original design idea was inspired by the unique design languages in different eras. It is the unique property design that has both indoor-outdoor experiences with comprehensive functions with the perfect location in Bangkok, Thailand.



FLOOR PLAN	DIMENSION	HEIGHT	MAX CAPACITY			
	[m]	[m]	theater	long table	cocktail	round table
Valavela Chamber	18 x 9	5.70	200	150	200	100
The Signature Lounge	9 x 4.5	2.58	40	20	30	20
The Arches' Lawn	14 x 6	-	150	60	70	60
Hallway Garden	25.5 x 6	-	80	-	-	-
The Overture	7.5 x 9	3.30	50	20	50	20
The Duet Patio	14 x 6	-	150	100	100	60
The Home Bar Dining	18 x 6.5	2.80 , 3.20	50	30	70	40

Car Parking : 175 cars

Maximun Guest : 350 persons

VARAVELA

FUNCTIONS

VARAVELA CHAMBER



Our main hall with a high ceiling. This is the special design that is perfect for all banquet and reception functions. It is also connected to our outdoors spaces perfectly.

THE SIGNATURE LOUNGE



This is the multi-function room with showering room built in. This could turn into a family rest room, conducting the nuptial bed ceremony or even make extra private seats for VIP guest during the event.

THE ARCHES' LAWN



The outdoor lawn that is connected to the main hall. This also serves as another outdoor open space to perform many functions, such as, extra table set, Food & Beverage Station and more.

HALLWAY GARDEN



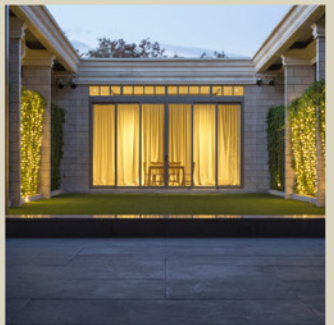
The main welcome space that is surrounded by high Banyan tree wall and Silky Oak trees. The perfect space to set up outdoor activity to start the ceremony / event.

THE OVERTURE



The cozy and classy welcome room that is connected to the green lawn. It is the perfect room to host any cozy opening scene.

THE DUET PATIO



Our signature great grand lawn that creates the enclosed space, yet perfectly connected with both the entrance and the main hall. To create the perfect outdoor court yard experiences.

THE HOME BAR DINING



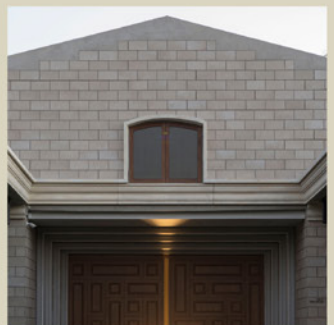
'Trattoria' experience in the Garden Hall. It is the perfect place to host special dinner experiences with your closed ones. The whole space is connected to the bar, the dining room and the terrace all together. It is also a perfect set up for buffet line during event function as well.

DRESSING ROOM



The dressing room that has both dressing table and all-around-glass room. It creates the perfect reflection about your truly beauty.

THE MEZZANINE ROOM



Our hidden mezzanine room is located on the 2nd floor. This is the signature space that is both connected to the Duet Patio and Varavela Chamber

WEDDING PARTY

HALF AREA PACKAGE

“The Wedding Party package is designed for those who loves small, happy and cheerful vibe.”

95,000. -

Limited No. of Guests: 50 Pax

Duration: 18.00 - 22.00

Space: Zone A Only

Venue Facilities & Amenities

- Hang-OUTDOOR Bar
- 50 Units of Chiavari Chairs & Tables
- Standard Sound System & 2 Microphones

Decoration Set

- Logo
- Reception Set Table
- Table top decoration
- Welcome Signage
- Strip light hanging at the Duet Patio



Prices are subject to VAT 7%

THE VENUE

PACKAGE A

“The venue package is designed for those who want to co-create your special day. We provide the space with fundamental services for you to host your wedding event.”

150,000.-

Space : All Area

Duration : 06.00 – 13.30 / 18.00 – 22.00 Hrs



Venue Facilities & Amenities

- Sofa Set, Tea table & Carpet
- 200 Units of Chiavari Chair & 20 Units of High Stool tables
- Standard Sound System & 4 Microphones
- Standard Equipment for Monk Blessing Ceremony
- 10 Units of Tripod Gallery
- Tea Set



The Venue Decoration Set

- Bridal Bouquet
- Corsages
- Reception Set
- Bride & Groom Welcome Signage 1 Unit
- Standard Flower Stand



Add-on
for option for
Water Pouring Ceremony

Prices are subject to 7% VAT

THE FINEST

PACKAGE B

“The Finest package is designed for those who seek easy luxury. It is the modest design that mixed between convenient ceremony experiences and very-fine decoration”

220,000.-

Space : All Area

Duration : 06.00 – 13.30 / 18.00 – 22.00 Hrs



Venue Facilities & Amenities from the Venue Package

- 1 Unit of Light Shading / Strip Light
- Flower Archtrave at Duet Patio



The Finest Decoration

- Photo Backdrop with Logo
- Stage Backdrop with Logo
- Bride & Groom Welcome Signage 1 Unit
- Flower Decoration on Dining Table 4 Unit
- Decoration for Cake Table / Champagne Tower 1 Set



Backdrop with Logo



Table Decoration



Welcome Signage



Decoration for Cake Table



Stage Backdrop with Logo

Prices are subject to 7% VAT

THE TOTAL LOOK

PACKAGE C

“The Total Look package is designed for those who wants to have VARAVELA decoration style with a full service of organizer.”

290,000.-

Space : All Area

Duration: 06.00 – 13.30 / 18.00 – 22.00 Hrs



Venue Facilities & Amenities from the Venue Package

- 1 Unit of Light Shading / Strip Light
- Flower Architrave at Duet Patio



The Total Look Decoration

- Photo Backdrop with Logo
- Stage Backdrop with Logo
- Bride & Groom Welcome Signage 1 Unit
- Decoration for Cake Table / Champagne Tower 1 Set
- Flower Decoration on Dining Table 6 Unit



Organizer & Service

- Run Que Team



Welcome Signage



Table Decoration



Decoration for Cake Table



Bride & Groom Logo

Prices are subject to 7% VAT

THE ELEGANCE

PACKAGE D



“The Elegance is the collaboration between Kaidang Design and VARAVELA. It is the signature design which synchronized between VARAVELA design and Kaidang Flower Styling.”

340,000.-

Space : All Area
Duration: 06.00 – 13.30 / 18.00 – 22.00 Hrs



Venue Facilities & Amenities from the Venue Package

- Light Shading / Strip Light
- Flower Architrave at Duet Patio



THE ELEGANCE (Varavela x Kaidang)

- Photo Backdrop with Logo
- Stage Backdrop with Logo
- Bride & Groom Welcome Signage 1 Unit
- Decoration for Cake Table / Champagne Tower 1 Set
- Flower Decoration on Dining Table 6 Unit



Organizer & Service

- Run Que Team



Stage Backdrop with Logo



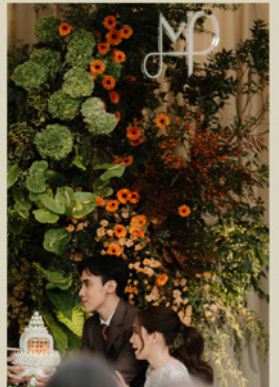
Bridal Bouquet



Welcome Signage



Decoration for Cake Table



Backdrop with Logo

Prices are subject to 7% VAT

THE PRESTIGE

PACKAGE E



“The Prestige is the supreme collaboration between KAIDANG Design and VARAVELA. It is the most ideal wedding experience that provide the full service, unique styling and completed services.”

420,000.-

Space : All Area

Duration: 06.00 – 13.30 / 18.00 – 22.00 Hrs



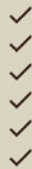
Venue Facilities & Amenities from the Venue Package

- Light Shading / Strip Light
- Flower Archtrave at Duet Patio



THE PRESTIGE (Varavela x Kaidang)

- Photo Backdrop with Logo
- Stage Backdrop with Logo
- Gallery
- Bride & Groom Welcome Signage 1 Unit
- Decoration for Cake Table / Champagne Tower 1 Set
- Flower Decoration on Dining Table 8 Unit



Organizer & Service

- Run Que Team
- Master of Ceremony



Stage Backdrop with Logo



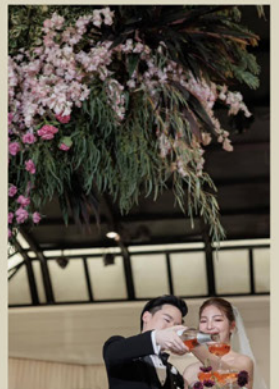
Bridal Bouquet



Welcome Signage



Backdrop with Logo



Champagne Tower

EXTRA DECORATION

Minimum: Cake Table 10,000 THB, Gallery 30,000 THB, Special Flower Color 15,000 THB, Hanging Flower 40,000 THB, Entrance 20,000 THB, Walkway 20,000 THB

Prices are subject to 7% VAT

SPECIAL SERVICES

“To add the full flavor to your wedding, we also provide an additional services to fulfill your special days.”

9 Phan Khan Mak	28,500 per / set
Extra Hour	15,000 per / hr
After Party at The Home Bar	30,000 baht / minimum
Beer Gallery	25,000 per / set
Run Queue Team	25,000 per / set
MC	15,000 / que
Decoration for Donut Tower + Donut Tower 1 Set	8,900 per / set
Holy Water Pouring Set (Start from 15,000 per / set)	15,000 per / set
Food for Monk Ceremony (Start from 9,500 / 9 monks)	9,500 / 9 monks
Bring in non-VARAVELA partner outsource Floral Decoration	50,000 baht



Phan Khan Mak



After Party at Varavela



After Party at The Home Bar



Wine Cart



Holy Water Pouring Set



Food for Monk Ceremony



Donut Tower



Beer Gallery

Prices are subject to 7% VAT

FOOD & BEVERAGE

THIS PRICE EXCLUDES VAT 7 %

MORNING BREAK

Breakfast Bar (Minimum 50 Pax)

PRICE (THB)

500 / Person

BUFFET

Standard Buffet (9 Items)

Standard 6 (Dessert 1 / Fruit 1 / Jasmine Rice 1 / Drinking Water)

International Buffet (10 Items)

International 6 (Dessert 1 / Side Dish 1 / Fruit 1 / Jasmine Rice 1 / Drinking Water)

PRICE (THB)

950 / Person

1,100 / Person

COCKTAIL

Cocktail (6 Items)

Cocktail 6 Items / Food Station 3 Stations

PRICE (THB)

1,300 / Person

CHINESE SET

Chinese Set Superior

Chinese Set Deluxe

PRICE (THB)

15,500 / 10 Persons

20,000 / 10 Persons

INDIVIDUAL SERVE

Individual Serve 5 Courses

PRICE (THB)

2,200 / Person

ALCOHOL BEVERAGE

Wedding Wine

Draught Beer

PRICE (THB)

Start from 950 / Bottle

Start from 6,500 / Barrel

BRING IN CHARGE

Corkage Charge (Wine/Whisky)

Bring in Draught Beer

Bring in Food Station

PRICE (THB)

550 / Bottle

3,500 / Barrel

15,000 / Station



Morning Break



Individual Serve



Cocktail



Food Station

VARAVELA GARDEN HALL

ABOUT PLACE ABOUT TIME

-  @VARAVELA
-  VARAVELA
-  VARAVELA_OFFICIAL
-  HELLO@VARAVELA.COM
-  VARAVELA GARDEN HALL
-  02-946-6626 , 097-271-3888
-  WWW.VARAVELA.COM

Varavela.



GOOGLE MAP